



National Children's Center
for Rural and Agricultural Health and Safety

2014 Fact Sheet

Childhood Agricultural Injuries in the U. S.

Population at Risk

- Farms** ■ In 2012, there were approximately 2.2 million farms in the United States.¹
- Children** ■ More than 955,400 youth lived on farms in 2012 and almost half (49%) worked on their farm.²
- About 258,800 non-resident youth were hired in agriculture in 2012, up from 230,400 in 2009.²

Toll of Childhood Agricultural Injuries

- Deaths** ■ About every three days, a child dies in an agriculture-related incident.*
- Of the leading sources of fatalities among all youth, 25% involved machinery, 17% involved motor vehicles (includes ATVs), and 16% were drownings.³
- Among working youth, vehicles and machinery accounted for 73% of deaths.⁴
- Nonfatal Injuries** ■ Every day, about 38 children are injured in an agriculture-related incident.**
- In 2012, an estimated 7,780 household youth were injured on a farm and 80% of them were not working when the injury occurred.²
- Leading sources of nonfatal injuries are surfaces (falls), animals and vehicles.²

There is no central database on childhood agricultural injuries. This fact sheet draws from the best available data.

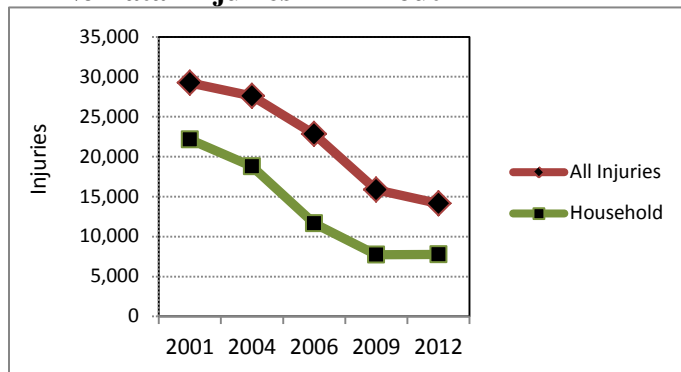
Injury Trends

- Injury Trend** ■ From 1998 to 2012, the rate of childhood agricultural injuries per 1,000 farms (includes youth who live on, visit, and are hired to work on farms) declined by 61% and the rate of injuries per 1,000 household youth (those living on farms) declined by 57%.²
- While overall rates are declining, farm injuries among children under 10 years are increasing.²
- Among household youth, the gap between males having higher injury rates than females has decreased.²

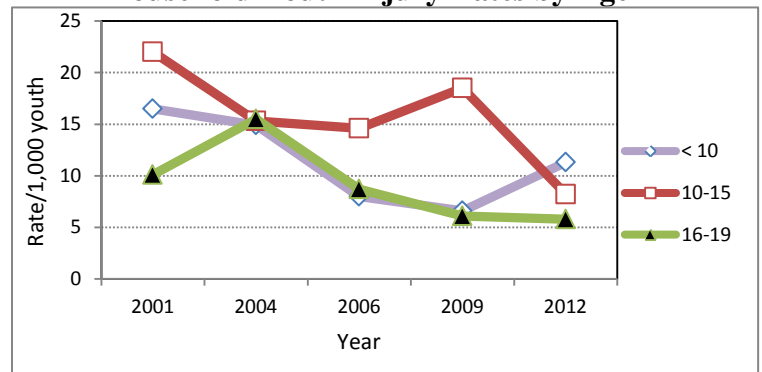
Childhood Agricultural Injury Estimates of Youth Farm Injuries

Year	Farm Injuries Youth < 20	Injuries/1000 Farms	Farm Household Youth < 20	Farm Household Youth Injuries	Injuries/1000 Household Youth
1998	37,774	16.6	1,460,000	27,321	18.8
2001	29,277	13.5	1,350,000	22,144	16.4
2004	27,591	13.1	1,257,000	18,801	15.0
2006	22,894	11.0	1,120,000	11,654	10.4
2009	15,876	7.2	1,040,200	7,715	7.5
2012	13,996	6.4	955,400	7783	8.1

Nonfatal Injuries – All Youth

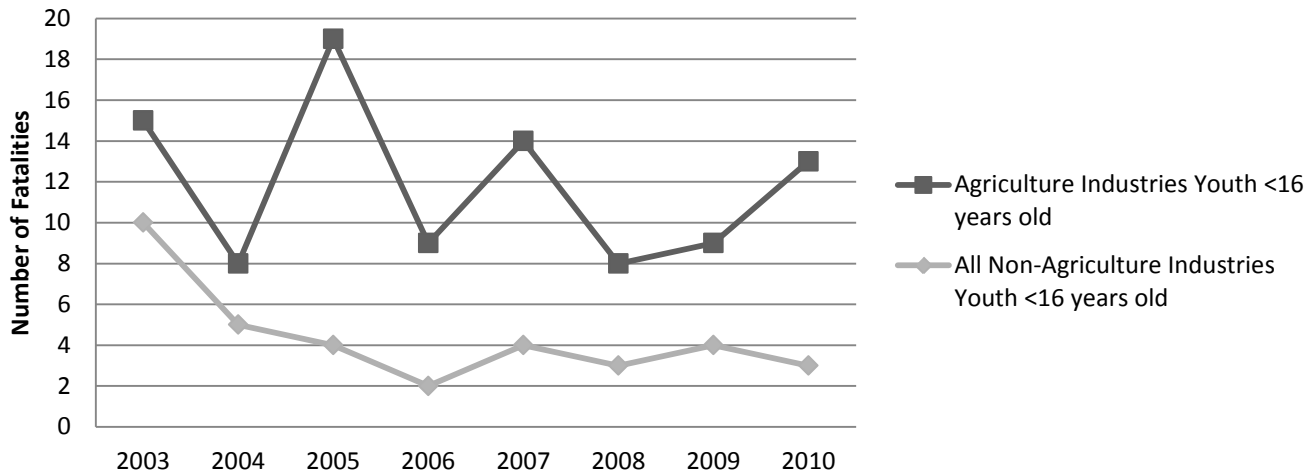


Household Youth Injury Rates by Age



Note: Data from the Childhood Agricultural Injury Survey (CAIS) does not include injuries to contract laborers. For more detailed child agricultural injury data, go to <http://www.cdc.gov/niosh/topics/childag/>.

Occupational fatalities in the U.S. among workers younger than 16 years old

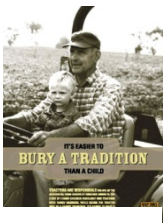


Reprinted with permission from Wright et al (2013).⁵

Economic Data

Nonfatal Injuries	▪ Youth agricultural injuries cost society an estimated \$1 billion per year (in 2005 dollars). ⁶
Fatalities	▪ Youth agricultural deaths cost society an estimated \$420 million per year (2005 dollars). ⁶

Prevention Strategies and Resources



[Tractor Safety](#)



[ATV Safety](#)



[Creating Safe Play Areas on Farms](#)



[Integrating Safety into Agritourism](#)



[North American Guidelines for Children's Agricultural Tasks](#)



[Safety Guidelines for Hired Adolescent Workers](#)

*From reported 115 agriculture-related deaths annually from 1995 to 2000.³

**From estimated 13,996 injuries annually.²

References

1. USDA, NASS publications: Farms, Land in Farms, and Livestock Operations, 2012 Summary, February 2013. Available at: <http://usda01.library.cornell.edu/usda/current/FarmLandIn/FarmLandIn-02-19-2013.pdf>
2. NIOSH (2013). Analyses of the 2012 Childhood Agricultural Injury Survey (CAIS). Morgantown WV: U.S. Department of Health and Human Services, Public Health Service, Centers for Disease Control and Prevention, National Institute for Occupational Safety and Health, Division of Safety Research. Unpublished.
3. Goldcamp M, Hendricks KJ, Meyers JR. (2004). Farm Fatalities to youth 1995-2000: A comparison by age groups. *Journal of Safety Research*. Vol. 35(2): 151-157.
4. Hard DL, Myers JR (2006). Fatal work-related injuries in the agriculture production sector among youth in the United States, 1992-2002. *J Agromedicine*. Vol. 11:57-65.
5. Wright S, Marlenga B, Lee BC (2013). Childhood agricultural injuries: An update for clinicians. *Curr Probl Pediatr Adolesc Health Care*. Vol. 43(2): 20-44.
6. Zaloshnja E, Miller TR, Lawrence B (2012). Incidence and Cost of Injury Among Youths in Agricultural Settings, United States, 2001-2006 *Pediatrics*. Vol. 129(4): 728-734.



For more information contact:
National Children's Center for Rural and Agricultural Health and Safety
 Phone: 800-662-6900
 Email: nccrahs@mcrf.mfldclin.edu
 Website: <http://marshfieldclinic.org/nccrahs/>

Updated December 2013